

Technical Data Sheet



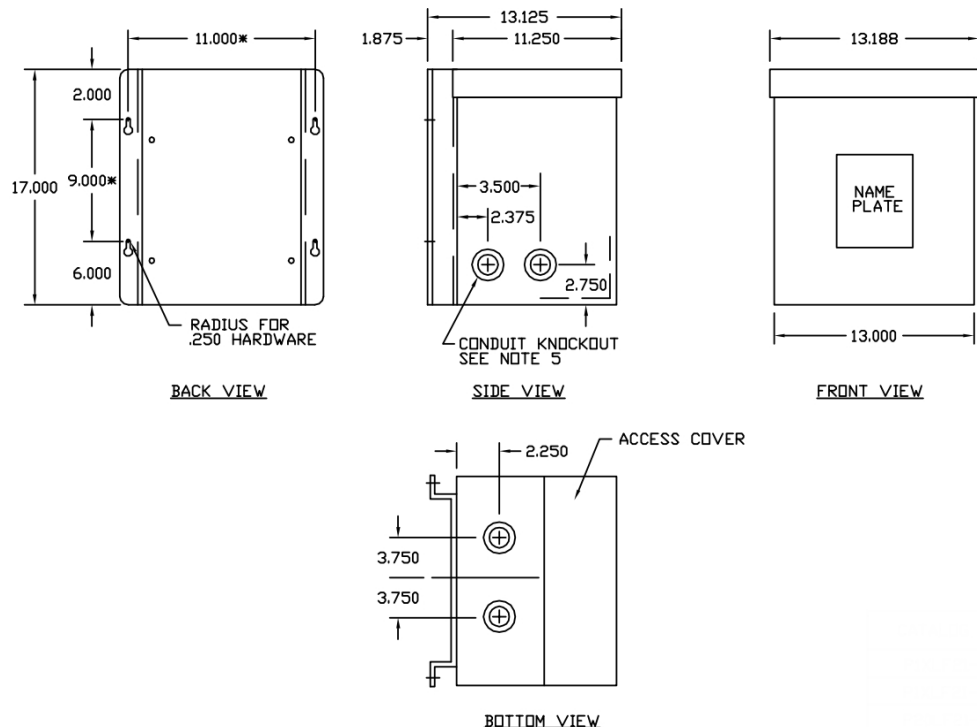
Catalog No. P1XLF21-10

Characteristics		Notes	Wiring Diagram - 5																	
Phase	1	<p>All units are UL listed and are designed in accordance with applicable NEMA, ANSI and IEEE standards.</p> <p>Transformers are dry-type AA, non-ventilated NEMA 3R enclosure.</p> <p>Transformers are wall mounted. Wall mounting bracket is built into the enclosure.</p> <p>Paint color is ANSI 61.</p>																		
KVA	10																			
Primary	120X240V																			
Secondary	120/240V																			
Conductor	Aluminum																			
Temp. Rise	115° C	<table><tr><th colspan="3">AMP Ratings</th></tr><tr><td>Line In (Load) @ 120V</td><td>83.3 A</td><td></td></tr><tr><td>Line In (Load) @ 240V</td><td>41.7 A</td><td></td></tr><tr><td colspan="3"><hr/></td></tr><tr><td>Load (Secondary) @ 120V</td><td>83.3 A</td><td></td></tr><tr><td>Load (Secondary) @ 240V</td><td>41.7 A</td><td></td></tr></table>	AMP Ratings			Line In (Load) @ 120V	83.3 A		Line In (Load) @ 240V	41.7 A		<hr/>			Load (Secondary) @ 120V	83.3 A		Load (Secondary) @ 240V	41.7 A	
AMP Ratings																				
Line In (Load) @ 120V	83.3 A																			
Line In (Load) @ 240V	41.7 A																			
<hr/>																				
Load (Secondary) @ 120V	83.3 A																			
Load (Secondary) @ 240V	41.7 A																			
Frequency	60 HZ																			
Taps	None																			
ESS	No																			
Insulation	180° C																			
Weathershield	N/A																			
Wall Bracket	Built-In																			
Weight (lbs)	175																			
Sound (dB)	45																			

VOLTS	CONNECTIONS	LINE LEADS
240	H2,H3	H1, H4
120	H1-H3, H2-H4	H1,H4
240	X2 - X3	X1, X4
240/120	X2-X3	X1, X2, X4
120	X1-X3, X2-X4	X1, X4

AMP Ratings

Line In (Load) @ 120V	83.3A
Line In (Load) @ 240V	41.7A
Load (Secondary) @ 120V	83.3A
Load (Secondary) @ 240V	41.7A



Outline No: 05A1466